

The



Trainmaster

April,
1998

The Official Publication of the
Pacific Northwest Chapter,
National Railway Historical Society
Portland, Oregon



April Meetings:

Board of Directors Meeting:

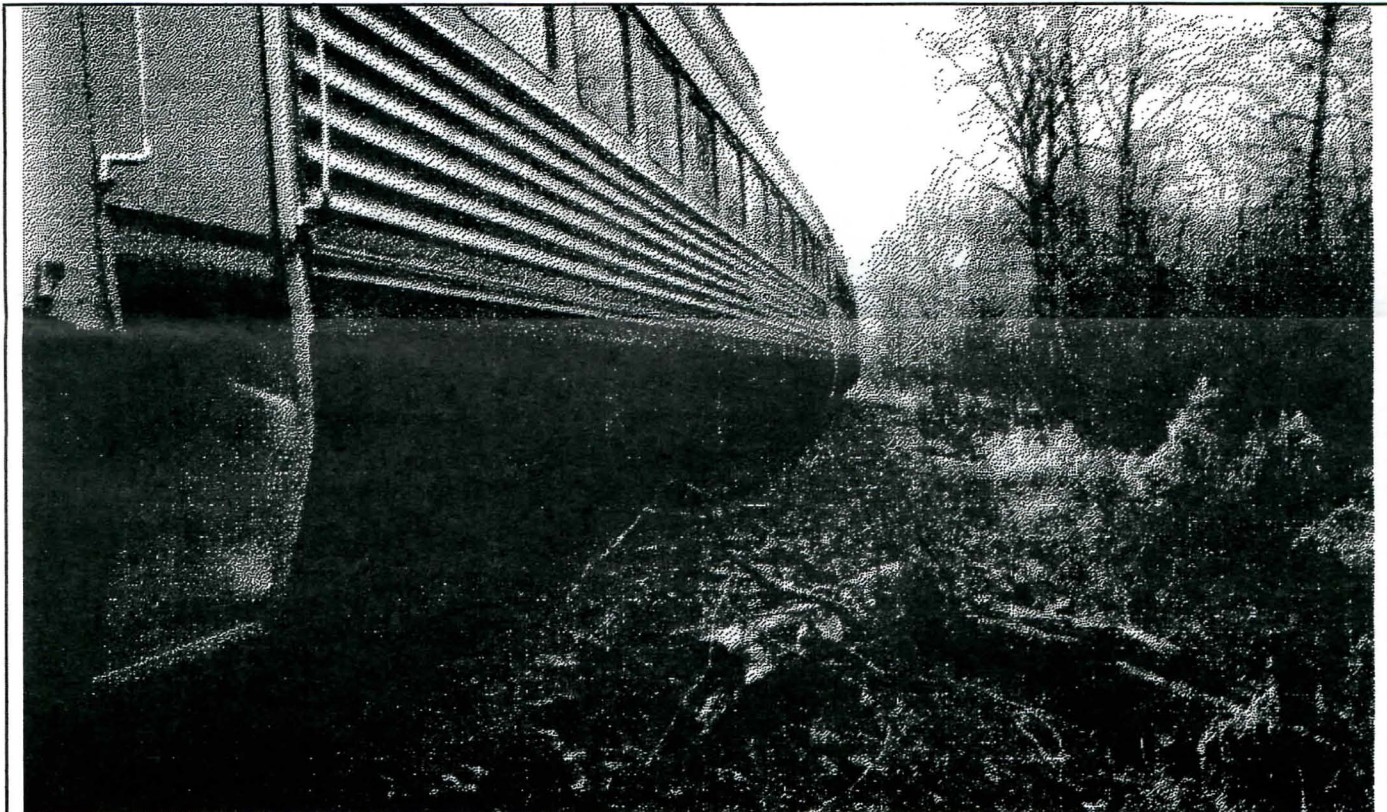
April 9, Room 208, Portland Union Station, 7:00 PM

General Membership Meeting:

April 17, St. Marks's Lutheran Church, 5415 S.E. Powell Blvd., 7:30 PM

RDC's Survive Blow by Tree

by Glenn Laubaugh - Photos Contributed by George Hickok



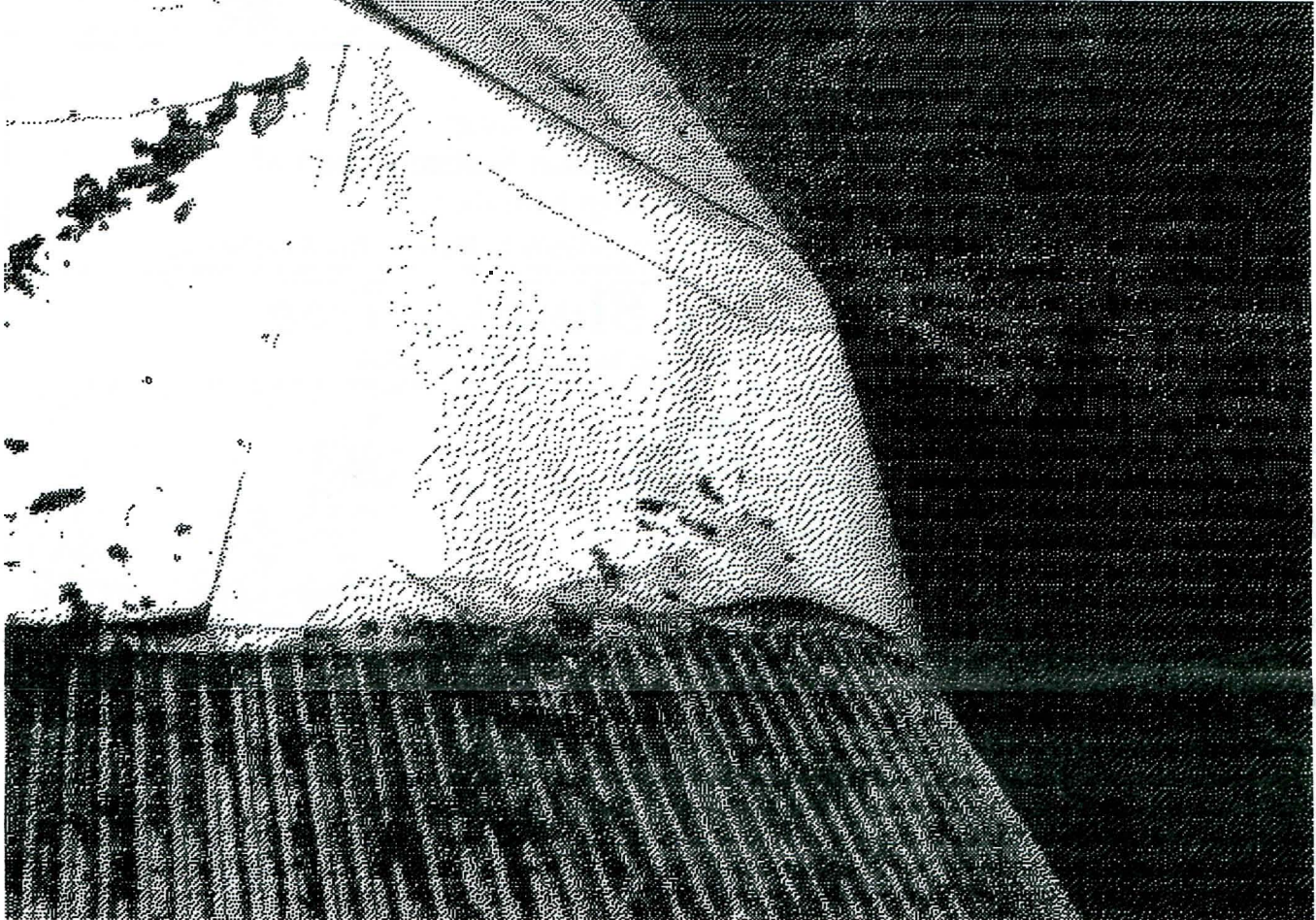
This tree fell on one of our RDC-9's, but the car survived.

Two of the passenger cars owned by our chapter are two RDC-9's, once on the roster of the Boston & Maine. A traditional Budd Company Rail Diesel Car (RDC) is a self-propelled passenger car with locomotive-style cab controls on each end. Unfortunately, these units are expensive to maintain, because they have all the maintenance costs of a locomotive, plus all the maintenance costs of a passenger car. In order to economically operate trains of RDC's on routes requiring multiple-car trains, some other type of car had to be used. Thus, the RDC-9's, like those our chapter owns, were developed: they are not equipped with cabs or full controls, and do not have enough power to move themselves at mainline speeds. They are designed as mid-train units only: to be operated with a traditional Budd RDC on the ends of the train.

Due to our lack of adequate storage facilities for our rolling stock, the cars have been in storage in an extremely remote siding on the Willamette & Pacific / Portland & Western system.

Chapter president George Hickok was rather worried in early March, when he received a call from Bob Melbo of the Willamette & Pacific / Portland & Western companies, informing him that a tree had fallen on one of the cars.

Thankfully, the tree involved was fairly small, and also fairly rotten. The extent of the damage appears to be a dent in the roof of the car.



Library's Updated List of Desired Periodicals

KNOWN PERIODICALS WE WOULD LIKE TO HAVE:

The following is a list of periodicals that we know are, or at one time were, published about railroads in the Pacific Northwest. The railroad research library, operated by the chapter, would like to get its hands on these publications, as noted.

Along Northern Pacific Railway's Mainstreet, newsletter published by Northern Pacific Railway's Advertising and Publicity Department between 1967 and 1969. The library owns no issues.

BN Columbia Hot Line, employee newsletter published in Portland in the 1970s by the Burlington Northern Portland Region. The library has only two scattered copies.

BN News, Burlington Northern Railroad Company employee magazine, published in Saint Paul beginning in 1982, successor to Burlington Northern News. The library has only the first issue, Jan. 1982.

BN Today, employee daily published in the 1990s, distributed by fax by Burlington Northern Corporate Communications from Fort Worth. The library has no issues.

The Cascadian, newsletter published by the Great Northern Railway in the 1960s. The library has no issues.

Dope Bucket, published in the 1970s, journal of the Spokane, Portland and Seattle Technical Society, a precursor of the present SP&S Historical Society. The library has no issues.

The Grapevine, employee newsletter of the Southern Pacific Portland and Oregon divisions, published in Portland in the 1960s and 70s. The library has three scattered copies.

Great Northern Bulletin, published in the 1890s and 1900s by Great Northern Railway. The library has no issues.

Great Northern Goat, magazine of the GN Marketing Department. Published from 1924 to 1931 and 1937 to 1970 (called *The Goat* in 1969 and 1970). The library owns three scattered copies.

Great Northern Semaphore, published by GN in Saint Paul between 1925 and 1928. The library owns no issues.

The Guard Rail, employee newsletter of the Northern Pacific Terminal Railroad Company of Oregon and its successor, Portland Terminal Railroad Company. The library owns only vol. 17 (1970).

Harriman Magazine, predecessor of Pacific Semaphore, published in Portland in 1913 by the Harriman-associated lines, Oregon-Washington Railway & Navigation and Southern Pacific. The library owns no issues.

Inside Burlington Northern Railroad, employee tabloid published by Corporate Communications in Fort Worth beginning in 1989. The library has three scattered copies.

Keeping Track, newsletter of the Oregon Railroad Association, Portland, a industry trade group, published beginning in 1964. The library has two issues.

Locomotive Notes and Locomotive Notes II, news-letters published by Roy Linscott (1963-1982) and later by Ken Ardinger (1988-) describing locomotives of North American railroads, particularly of regional, short line and industrial railroads.

Milwest Dispatch, newsletter of Milwest, a historical and preservation group founded in 1987 and interested in the Milwaukee Road, Lines West. The library has copies of vol. 5 (1992) only.

News Update: a Burlington Northern News Bulletin for Active Employees, published by Corporate Communications beginning in 1987. Library owns the September-December 1988 issue only.

The North Coaster, newsletter published by the Passenger Traffic Department of the Northern Pacific Railway, ending in 1968. Library has four scattered copies.

Northern Corridor News, tabloid published beginning about 1991 by Burlington Northern director of communications in Seattle and distributed with *Inside Burlington Northern Railroad*. The library has two issues.

The Northwest, newsletter of the Northern Pacific Railroad, published in Saint Paul beginning in 1927. Known as **The Northwest and its Resources** between 1955 and 1967. The library has only the May/June 1964 issue.

Northwest Railroader, magazine published for railroad employees in the 1940s. The library owns no issues.

NRLPA News, newsletter of the Northwest Railway and Locomotive Preservation Association, published in Seattle from 1990 to 1994. The library has three issues.

Our Family, newsletter of the Oregon Short Line, ceased in August 1920. The library owns no issues.

Pacific Coast Railroader, magazine of the Pacific Coast Railroadmen's Association, Spokane, published in the 1940s. The library has the May 1945 issue.

Pacific Railway Journal, published in Los Angeles by the Pacific Railroad Society beginning in 1954 and ending in 1962, contains historical feature articles on western railroads. The library has five scattered issues from 1955 to 1957.

Pacific Semaphore, employee magazine published in Portland by the Oregon-Washington Railroad & Navigation Company beginning in 1913. It merged with The Union Pacific Magazine in January 1922. The library owns no issues.

The Pantograph, newsletter of the Northwest Railfan Group of Seattle, published in the 1960s. The library has three issues from October 1966 to January 1967.

Portland Carman, published by the Portland Railway, Light and Power Company in the 1910s. The library owns no copies.

Rails, official magazine of the Joint Railway Employees Association, an organization of labor unions in Tacoma. The library has three issues from April to September 1953.

The Sandhouse, newsletter of the Pacific Coast Division of the Canadian Railroad Historical Association, Vancouver, B.C. Publication began in 1976. Library has only the March 1994 issue.

The Shasta Router, newsletter published in Portland by the Southern Pacific Passenger Traffic Department. The library owns only vol. 18, no. 4 (December 1948).

The Sunset Express, tabloid published by the Vernonia, South Park & Sunset Steam Railroad, which operated steam passenger trains between Banks and Vernonia, Oregon from 1964 to 1969. The library has only vol. 2, no. 1.

Talking It Over, newsletter published from 1958 to 1970 in Saint Paul by the Great Northern Railway. The library owns only the August 1959 issue.

The Tell Tail, employee newsletter of the Northern Pacific Railway, published from about 1939 to about 1970. The library has 78 scattered issues with none before 1948 or after 1959.

Trolley Park News, newsletter of the Oregon Electric Railway Historical Society published since the 1960s. The library owns only 11 scattered issues.

Wheel Report, newsletter published by Oregon members of the Railway and Locomotive Historical Society in the 1980s. The library owns one issue.

Watts Watt, newsletter for patrons published by Portland Railway, Light and Power Company and its successors between 1915 and 1931. The library owns no issues.

Western Railroading, magazine for railroad workers published in Spokane by the Pacific Coast Railroadmen's Association in the 1940s. Successor to Northwest Railroader and Pacific Coast Railroader. Library has one issue, July 1945.

Western Railway Review, magazine published in Tacoma by railroad shop craft unions beginning about 1939. Library has only one issue, August/September 1947.

Westviews, corporate newsletter published by Burlington Northern Inc., in Saint Paul. Library owns only no. 56 (November 23, 1977).

Union Station Alliance Formed

The various tenants of Union Station are working on forming an organization to promote improved conditions for tenants of Portland's Union Station. The chapter has considerable interest in this due to our interest in Union Station as a historic railroad structure, as well as our tenancy there. Rich Carlson has been appointed to represent us at the meetings of this group. While our involvement must be somewhat limited, due to our tax-exempt status preventing certain political activities, we need to keep informed of these events.

Information about the Union Station Alliance appeared in an article in the March 11-17 issue of *Willamette Week*.

General Business Meeting Minutes

General Business Meeting,
March 20, 1998

CTO: The meeting was opened at 7:45PM

Welcome Members & Guests

Treasurer's Report: Bond Holders Redemption update. There are 7 bond holders outstanding.

Officer's Reports:

President The PRPA called and suggested that we combine our rolling stock for future excursions. It was asked by a member about the opening of Cornelius Pass--George said it has been delayed until mid-June. Bob Melbo of P&W and W&P said there will be excursions over Cornelius Pass in the near future. We are looking at Hillsboro as a home for our rolling stock. A permanent home is absolutely vital to the future of our organization said George.

National Director No report.

Committee Reports:

Finance No report

Rolling Stock--A tree fell on one of the RDC's. George says we need to get our equipment off of the P&W and W&P tracks. **The 1220 has been sold ---- back to the person we acquired it from. The sale of the Santa Inez and the Twin Grove has been withdrawn.

Membership--220 members have paid their dues. We had 250 members at the end of 1997. The numbers do not include family members.

Excursions--April 18 and 19 --the three passenger car train is selling fast. First Class (90 seats) is sold out. Coach (480 seats) has 170 sold, 310 remaining. There will be a work party tomorrow at 11:00 at Oregon Business Park to clean up the rolling stock for the trip.

Activities--No report.

Library--No report.

Museum--No report.

Trainmaster - Editor will be absent in June. Looking for a volunteer to edit July issue.

Activities--The Columbia Gorge Model RR Club has sent a letter requesting that we phase the Chapter out of the swap meet due to falling attendance and demand for booth participation. It was OK'd by the Board. Doug Auburg said we each netted about \$1800 for the swap meet.

Public Relations--No Report

Concessions--Jean Hickok is the new concessions chair person. We made \$99.00 at the swap meet. Marilyn and Jim Edgar handled the concessions for 12 years. A special thanks go out to them for all their hard work over the years.

Programs--Tonight there will be a video. Ralph Johnson said he has programs scheduled up until June and welcomes any suggestions for future programs and would like to have them booked ahead six months.

Old Business:

Locomotives at Glenwood - Owner is charging rent said Bob Terkelsen. The board recommended to move the equipment and due to the wet grounds the trucker has not been able to get in. It will be done asap. The Daisy Kingdom locomotives have been moved. The AS616 has been sold and the check is in transit. The 76 is being leased to the city of Toledo for a post office said Daryl Mack. The Speeder is going to the Canby Historical Society on loan. Bob Jackson said he can get a manual for the Speeder for making repairs etc.

New Business: The Chapter's lease at Union Station could be in jeopardy and may be on a month to month basis with all the upset going on at Union Station. The Board will have a representative at the tenant meetings to sort this out.

Tabled until next meeting:

Movement of Baldwin AS616 to W&P

Motion regarding disposition of Rolling Stock & bond Payoff

Good of the Order There will be a swap meet in Salem on April 4th.

Motion to close meeting at 9:00

Respectfully submitted,

Al Hall, Secretary

**The Pacific Northwest Chapter, NRHS presents
Rare Mileage Train Excursions
Through the north Willamette Valley
On the ex-Oregon Electric Line
April 18th and 19th
2 trips each day
Trains depart at 9am and 2:30 pm.
Trains depart from Beaverton and Travel to Brooks and Return.
Price: \$20 per person coach.
FIRST CLASS HAS SOLD OUT.**

Trainmaster Cut-Off:

If you have not paid your 1998 dues by April 30th, your name will be removed from our mailing list. The cost of producing the *Trainmaster* is about 1/2 that of income from member's dues. This is far beyond our needs for a member's newsletter, and the money could be better spent elsewhere.

- submitted by Vice President Ralph Johnson



The Trainmaster

is the official newsletter of the Pacific Northwest Chapter of the National Railway Historical Society. It is published monthly for the benefit of its members. Articles which appear in the *Trainmaster* do not express the official position of the organization on any subject unless specifically noted as such. Material from the *Trainmaster* may be reprinted in other publications provided credit is given as to the source.

The NRHS was formed in 1935 to preserve historical material and information pertaining to railroad transportation. The Pacific Northwest Chapter, one of more than 170 affiliates, was formed in 1955 as a non-profit Oregon corporation. Any person age 16 or older with an interest in railroad history and transportation is eligible for membership.

Please address contributions, correspondence, and exchange copies of newsletters to:

Attn.: Trainmaster Editor

PNWC-NRHS

Room 1, Union Station

800 N.W. 6th Avenue

Portland, Oregon 97209-3715

Voice: (503) 226-6747, Fax: (503) 230-0572

E-Mail: pnwc@easystreet.com

<http://www.easystreet.com/pnwc>

(Internet service donated to the chapter by

EasyStreet On-Line Services, Beaverton, Oregon)

ISSN: 0041-0926

Editor: James Loomis

Associate Editor: Glenn Laubaugh

Circulation: Chuck Storz, (503) 289-4529

Please be sure to inform the membership chair at Membership Services, PNWC-NRHS, P.O. Box 2384, Portland, OR 97208-2384 of any changes in the status of your address.

Membership

in the Pacific Northwest Chapter, National Railway Historical Society is available as follows:

Regular: \$32/year, Joint: \$40/year

Membership prices include National Membership as well as membership in the local chapter. For more information, please contact the membership chair at the above address or phone number.

Trainmaster Contributions:

Contributions for the *Trainmaster* are most welcome. Deadline for each issue is the 20th of the previous month. Last minute additions may be made after that time, but publication can not be guaranteed. Contributions should be sent to the address, e-mail address, or fax at the top of this column, or be left in the mailbox in the door of Room 1, Union Station. Typed or word-processed material (3 1/2" disk Mac or MS-DOS plain text) is preferred for legibility, but not necessary.

Chapter Timetable #426 - April 1998

Regular Board of Directors Meetings:

Thursday, April 9th, 7:00pm. Room 208, Union Station. These meetings are scheduled on the Thursday evening of the week prior to the monthly membership meeting.

Monthly Membership Meetings:

Friday, April 17th, 7:30 PM. St. Mark's Lutheran Church, 5415 S.E. Powell. These meetings are conducted on the third Friday evening of every month.

Chapter Library Open Hours:

The Chapter's Railroad Research Library, located in Room 1 of Union Station, is staffed between 1:00 and 4:00 PM on usually two Saturdays a month.

Library Committee Meeting:

Due to the upcoming excursion, the monthly Library Committee meeting (usually at 1:00 pm on the Saturday following chapter membership meetings) has been moved to April 25th.

Upcoming Membership Meeting Programs :

April: Program from Jaakko Hanson from Finland: Finnish Railway System history, overview of current system, interchange with Russian railway system, plans for the future.

May: Bob Melbo, of Portland & Western. Subject of talk not available at press time.

June: Bruce Harmon from Greenbrier Cos., parent of Gunderson railroad car manufacturers. Explanation of different types of railroad cars and how they are made.

July: member Rich Carlson will present some samples from his 16mm film collection

August: "Steam Operated Sawmill" - video from collection of Naomi Gray

September: Slide show of slides from the NRHS national convention in Salt Lake City

If you have any programs or program suggestions that you feel would be of interest to the Chapter, Please contact Ralph Johnson at (503) 654-1930.

Committee Chairs

Activities: Marilyn Edgar, (503) 236-7271
Meeting Program Coordinator: Ralph Johnson,
(503) 654-1930
Concessions: , Jean Hickok, (503) 649-5762
Excursions: Irv Ewen (503) 282-9819
Finance: Ralph Johnson, (503) 654-1930
Library & Historical Foundation: Jim Loomis,
(503) 253-3926
Membership: Ralph Johnson, (503) 654-1930
Museum: Glenn Laubaugh, (503) 655-5466
Public Relations: Gerald Schuler,
(503) 285-7941
Publications: *Vacant*
Rolling Stock: *Vacant*
Chief Mechanical Officer:
Peter Rodabaugh, (503) 771-8545
Car Rental Agent:
Bob Jackson, (503) 231-4808

Chapter Officers

President ('98): George Hickok, (503) 649-5762
Vice-President ('98): Ralph Johnson, (503) 654-1930
Secretary ('98): Al Hall,
Treasurer ('98): Janet Larson (503) 253-7436
National Director ('94 , '95, '96, '97, '98):
Gerald Schuler (503) 285-7941

Directors-at-Large:

Ed Ackerman ('98, '99, '00): (503) 649-6000
Bob Jackson ('97, '98, '99): (503) 244-4440
Glenn Laubaugh ('98, '99, '00): (503) 655-5466
Darel Mack ('98): (503) 654-5017
Fax/Message (503) 654-2703
(Filled vacancy, position opens at end of 1998)
John Willworth ('97, '98, '99): (503) 284-8628
Frank Weiler ('96, '97, '98): (503) 774-3319

The *TRAINMASTER*
Pacific Northwest Chapter
National Railway Historical Society
Room 1, Union Station
800 N.W. 6th Avenue
Portland, OR 97209-3715

Address Service Requested

NON-PROFIT
ORGANIZATION
U.S. Postage
Paid
Portland, OR
Permit No. 595